



Test Report No. F690101/LF-CTSAYGU15-01063

Issued Date : 2015. 02. 09

Page 1 of 5

BnK
27 Sinan 2-gil, Samnam-myeon
Ulju-gun, Ulsan
Korea

The following sample(s) was/were submitted and identified by/on behalf of the client as:-

SGS File No. : AYGU15-01063
Product Name : BnK Purement
Item No./Part No. : N/A
Received Date : 2015. 02. 04
Test Period : 2015. 02. 05 to 2015. 02. 09
Test Results : For further details, please refer to following page(s)

SGS Korea Co., Ltd.
/ Gimhae Laboratory

Thomas Hwang / Lab Manager

This document is issued by the Company subject to its General Conditions of Service printed overleaf, available on request or accessible at <http://www.sgs.com/en/Terms-and-Conditions.aspx> and, for electronic format documents, subject to Terms and Conditions for Electronic Documents at www.sgs.com/terms-e-document.htm <<http://www.sgs.com/terms-e-document.htm>>. Attention is drawn to the limitation of liability, indemnification and jurisdiction issues defined therein. Any holder of this document is advised that information contained hereon reflects the Company's findings at the time of its intervention only and within the limits of Client's instructions, if any. The Company's sole responsibility is to its Client and this document does not exonerate parties to a transaction from exercising all their rights and obligations under the transaction documents. This document cannot be reproduced except in full, without prior written approval of the Company. Any unauthorized alteration, forgery or falsification of the content or appearance of this document is unlawful and offenders may be prosecuted to the fullest extent of the law. Unless otherwise stated the results shown in this test report refer only to the sample(s).

SGS Korea Co., Ltd.

204, GBMC, 88 Somang-gil, Juchon-myeon, Gimhae-si, Gyeongnam, Korea 621-842
t +82 (0)55 310 8801 f +82 (0)55 310 8809 <http://www.sgs.com>



Test Report No. F690101/LF-CTSAYGU15-01063

Issued Date : 2015. 02. 09

Page 2 of 5

Sample No. : AYGU15-01063.001
Sample Description : BrK Purement
Item No./Part No. : N/A
Materials : N/A

Heavy Metals

| Test Items | Unit | Test Method | MDL | Results |
|-----------------------------|-------|---|-----|---------|
| Cadmium (Cd) | mg/kg | With reference to IEC 62321-5:2013(Determination of Cadmium by ICP-OES) | 0.5 | N.D. |
| Lead (Pb) | mg/kg | With reference to IEC 62321-5:2013(Determination of Lead by ICP-OES) | 5 | N.D. |
| Mercury (Hg) | mg/kg | With reference to IEC 62321-4:2013(Determination of Mercury by ICP-OES) | 2 | N.D. |
| Hexavalent Chromium (Cr VI) | mg/kg | with reference to IEC 62321:2008 (Determination of Hexavalent Chromium by spot test/Colorimetric Method using UV-Vis) | 1 | N.D. |

Flame Retardants-PBBs/PBDEs

| Test Items | Unit | Test Method | MDL | Results |
|-------------------------|-------|---|-----|---------|
| Monobromobiphenyl | mg/kg | With reference to IEC 62321:2008 (Determination of PBBs and PBDEs by GC-MS) | 5 | N.D. |
| Dibromobiphenyl | mg/kg | With reference to IEC 62321:2008 (Determination of PBBs and PBDEs by GC-MS) | 5 | N.D. |
| Tribromobiphenyl | mg/kg | With reference to IEC 62321:2008 (Determination of PBBs and PBDEs by GC-MS) | 5 | N.D. |
| Tetrabromobiphenyl | mg/kg | With reference to IEC 62321:2008 (Determination of PBBs and PBDEs by GC-MS) | 5 | N.D. |
| Pentabromobiphenyl | mg/kg | With reference to IEC 62321:2008 (Determination of PBBs and PBDEs by GC-MS) | 5 | N.D. |
| Hexabromobiphenyl | mg/kg | With reference to IEC 62321:2008 (Determination of PBBs and PBDEs by GC-MS) | 5 | N.D. |
| Heptabromobiphenyl | mg/kg | With reference to IEC 62321:2008 (Determination of PBBs and PBDEs by GC-MS) | 5 | N.D. |
| Octabromobiphenyl | mg/kg | With reference to IEC 62321:2008 (Determination of PBBs and PBDEs by GC-MS) | 5 | N.D. |
| Nonabromobiphenyl | mg/kg | With reference to IEC 62321:2008 (Determination of PBBs and PBDEs by GC-MS) | 5 | N.D. |
| Decabromobiphenyl | mg/kg | With reference to IEC 62321:2008 (Determination of PBBs and PBDEs by GC-MS) | 5 | N.D. |
| Monobromodiphenyl ether | mg/kg | With reference to IEC 62321:2008 (Determination of PBBs and PBDEs by GC-MS) | 5 | N.D. |
| Dibromodiphenyl ether | mg/kg | With reference to IEC 62321:2008 (Determination of PBBs and PBDEs by GC-MS) | 5 | N.D. |
| Tribromodiphenyl ether | mg/kg | With reference to IEC 62321:2008 (Determination of PBBs and PBDEs by GC-MS) | 5 | N.D. |

This document is issued by the Company subject to its General Conditions of Service printed overleaf, available on request or accessible at <http://www.sgs.com/en/Terms-and-Conditions.aspx> and, for electronic format documents, subject to Terms and Conditions for Electronic Documents at www.sgs.com/terms-e-document.htm and <http://www.sgs.com/terms-e-document.htm>. Attention is drawn to the limitation of liability, indemnification and jurisdiction issues defined therein. Any holder of this document is advised that information contained hereon reflects the Company's findings at the time of its intervention only and within the limits of Client's instructions, if any. The Company's sole responsibility is to its Client and this document does not exonerate parties to a transaction from exercising all their rights and obligations under the transaction documents. This document cannot be reproduced except in full, without prior written approval of the Company. Any unauthorized alteration, forgery or falsification of the content or appearance of this document is unlawful and offenders may be prosecuted to the fullest extent of the law. Unless otherwise stated the results shown in this test report refer only to the sample(s).

SGS Korea Co., Ltd.

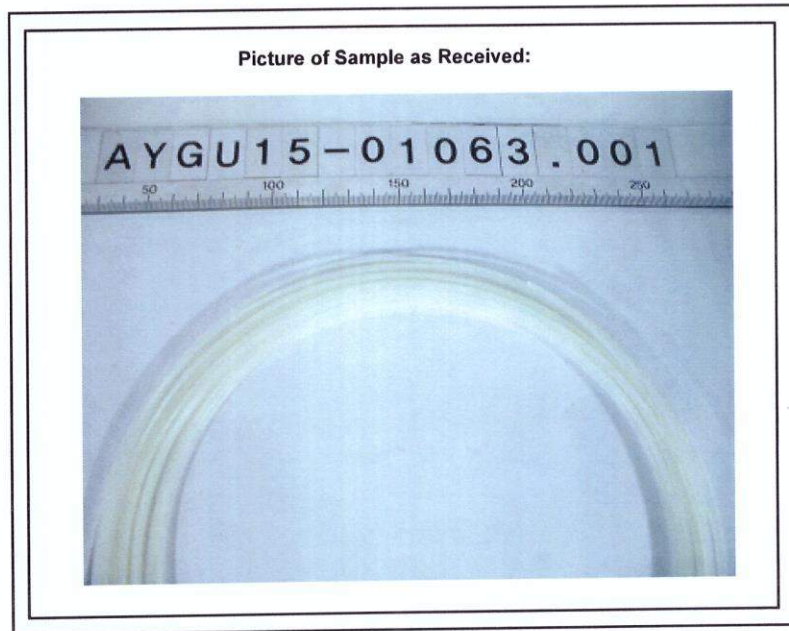
204, GBMC, 88 Somang-gil, Juchon-myeon, Gimhae-si, Gyeongnam, Korea 621-842
t +82 (0)55 310 8801 f +82 (0)55 310 8809 <http://www.sgsgroup.kr>



Test Report No. F690101/LF-CTSAYGU15-01063

Issued Date : 2015. 02. 09

Page 4 of 5



This document is issued by the Company subject to its General Conditions of Service printed overleaf, available on request or accessible at <http://www.sgs.com/en/Terms-and-Conditions.aspx> and, for electronic format documents, subject to Terms and Conditions for Electronic Documents at www.sgs.com/terms_e-document.htm http://www.sgs.com/terms_e-document.htm. Attention is drawn to the limitation of liability, indemnification and jurisdiction issues defined therein. Any holder of this document is advised that information contained hereon reflects the Company's findings at the time of its intervention only and within the limits of Client's instructions, if any. The Company's sole responsibility is to its Client and this document does not exonerate parties to a transaction from exercising all their rights and obligations under the transaction documents. This document cannot be reproduced except in full, without prior written approval of the Company. Any unauthorized alteration, forgery or falsification of the content or appearance of this document is unlawful and offenders may be prosecuted to the fullest extent of the law. Unless otherwise stated the results shown in this test report refer only to the sample(s).

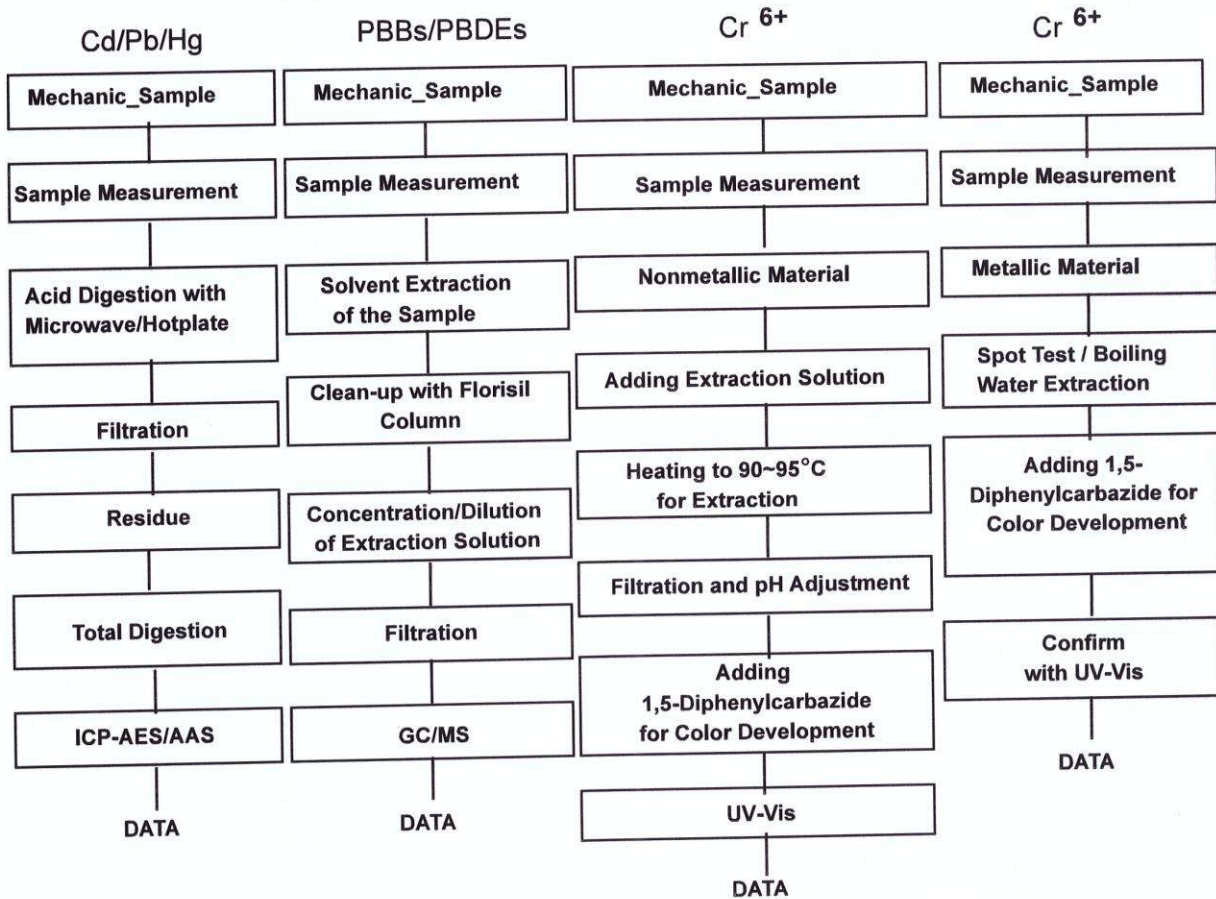
SGS Korea Co., Ltd.

204, GBMC, 88 Somang-gil, Juchon-myeon, Gimhae-si, Gyeongnam, Korea 621-842
t +82 (0)55 310 8801 f +82 (0)55 310 8809 <http://www.sgsgroup.kr>

F055 Version7

Member of the SGS Group (Société Générale de Surveillance)

Testing Flow Chart for RoHS: Cd/Pb/Hg/Cr⁶⁺ /PBBs&PBDEs Testing



The samples were dissolved totally by pre-conditioning method according to above flow chart for Cd,Pb,Hg.
Section Chief : Shapless Park

*** End of Report ***

This document is issued by the Company subject to its General Conditions of Service printed overleaf, available on request or accessible at <http://www.sgs.com/en/Terms-and-Conditions.aspx> and, for electronic format documents, subject to Terms and Conditions for Electronic Documents at www.sgs.com/terms_e-document.htm and http://www.sgs.com/terms_e-document.htm. Attention is drawn to the limitation of liability, indemnification and jurisdiction issues defined therein. Any holder of this document is advised that information contained hereon reflects the Company's findings at the time of its intervention only and within the limits of Client's instructions, if any. The Company's sole responsibility is to its Client and this document does not exonerate parties to a transaction from exercising all their rights and obligations under the transaction documents. This document cannot be reproduced except in full, without prior written approval of the Company. Any unauthorized alteration, forgery or falsification of the content or appearance of this document is unlawful and offenders may be prosecuted to the fullest extent of the law. Unless otherwise stated the results shown in this test report refer only to the sample(s).